

# ledix

## LED lighting fitting MOZA



Mounting  
indoor only



Supply voltage  
230 V AC



Mounting  
in a Ø60 junction box.



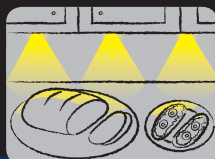
### Application:



stairs



corridors, passageways



furniture, decorative lighting

zaMeL cet

## LED lighting fitting MOZA

IP20

230 V AC

ledix

zaMeL cet

### Cet Lighting Sp. z o.o.

PL 43-200 Pszczyna, ul. Zielona 27, Poland  
tel: +48 32 449 15 00, fax: +48 32 449 15 02  
e-mail: [ledix@ledix.pl](mailto:ledix@ledix.pl), [www.ledix.pl](http://www.ledix.pl)

230 V AC; IP20  
weight: 174 g



Declaration of Conformity is on [www.ledix.pl](http://www.ledix.pl)



The symbol means selective collecting of electrical and electronic equipment.  
It is forbidden to put the used equipment together with other waste.

## TECHNICAL DATA

Supply voltage	230 V AC	
Power consumption	1,10 W – cold white	
	0,93 W – warm white	
	0,76 W – red	
	0,76 W – green	
	0,76 W – blue	
	cold white	warm white
Colour rendering index $R_a$	71	80
Colour temperature $T_c$ [K]	5900	3100
Luminous flux $\Phi$ [lm]	19	13
Luminous efficiency [lm/W]	34	31

IP20



Protection degree suitable for indoor use only



Built-in LED diode current stabilization system

4xLED

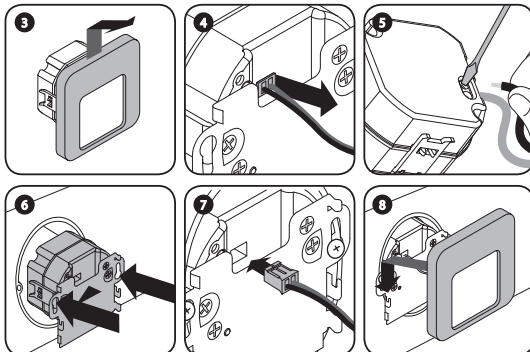
Light source - four LED diodes

## MOUNTING

**CAUTION!** The device is designed for single-phase installation and must be installed in accordance with standards valid in a particular country. Installation, connection and control should be carried out by a qualified electrician staff, who act in accordance with the service manual and the device functions.

Fitting is designed for mounting in Ø60 junction box.

1. Disconnect power supply by the phase fuse, the circuit-breaker or the switch- disconnector combined to the proper circuit.
2. Check if there is no voltage on connection cables by means of a special measure equipment.
3. Remove the fitting - with the help of fingers hold the control module and move the fitting upward (as shown in the Figure) and gently pull away from the mounting element.
4. Disconnect the connecting cables between the fitting and the control module.
5. Connect the installation cables into the appropriate terminals of the control module in accordance with the connection diagram.
6. Mount the control module in a Ø60 junction box and tighten the screws.
7. Connect the fitting cables with the module mounted in Ø60 junction box.
8. Mount the front of the fitting on the mounting element.
9. Switch on the power supply from the mains.
10. Check if the fitting works properly.



## INSTALLATION EXAMPLE

