

ledix

LED lighting fitting

MUNA

with motion and twilight sensor



The fitting is equipped with a built-in PIR motion sensor and a twilight sensor



Mounting
indoor only



Mounting
in a Ø60 junction box.

MUNA with a built-in motion and twilight sensor is a high quality LED fitting with decorative and application features. It is used for lighting corridors, passageways and staircases. The motion sensor enables the fitting to switch on after motion has been detected in the detection zone. The twilight sensor enables the lighting fitting to operate only with specific luminous flux density.

The features of the fitting:

- adjusted switching on time in the range of 2 ÷ 35 seconds,
- adjusted twilight switch sensitivity in the range of 2 ÷ 20 lx,
- operation range from 2 ÷ 3 m with a 120° opening angle, with an additional potential-free 1NO contact with a maximum capacity of 3 A, which can be used to add other fittings, for example, in staircases or corridors,
- luminous flux emitted in two planes: the lower and the front
- excellent lighting parameters obtained by applying the highest quality LED diodes by CREE,
- high quality, minimum power consumption and durability estimated to light continuously for five years (~40 000 h).

CAUTION:

- Power supplies of ZNP and ZNN series and of ZNM series in 14 V DC version by Cet Lighting are used to supply the fittings.



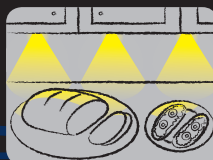
Application:



stairs



corridors, passageways



furniture, decorative lighting

zaMeL cet

LED lighting fitting

MUNA

with motion and twilight sensor



14 V DC

ledix

zaMeL cet

Cet Lighting Sp. z o.o.

PL 43-200 Pszczyna, ul. Zielona 27, Poland

tel: +48 32 449 15 00, fax: +48 32 449 15 02

e-mail: ledix@ledix.pl, www.ledix.pl

14 V DC; IP20

weight: 165 g



Declaration of Conformity
is on www.ledix.pl



The symbol means selective collecting of electrical and electronic equipment. It is forbidden to put the used equipment together with other waste.

02-212 ENG Ver. 01

TECHNICAL DATA

Supply voltage	14 V DC	
Power consumption	0,78 W – cold white	
	0,64 W – warm white	
	0,50 W – red	
	0,50 W – green	
	0,50 W – blue	
Operating range	maximum 3 m	
Switch on time adjustment	2 ÷ 35 s	
Twilight sensor's sensitivity adjustmen	2 ÷ 20 lx	
	cold white	warm white
Colour rendering index R _a	71	80
Colour temperature T _C [K]	5900	3100
Luminous flux Ø [lm]	18	12

IP20



Protection degree suitable for indoor use only



The fitting cooperates with photovoltaic cells

4xLED

Light source - four LED diodes



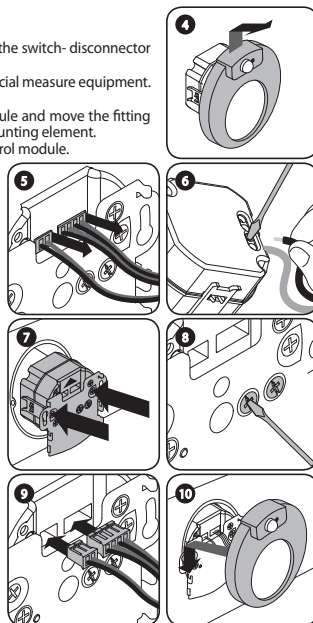
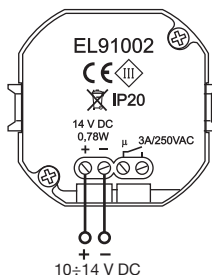
Built-in LED diode current stabilization system

MOUNTING

The device is designed for single-phase installation and must be installed in accordance with standards valid in a particular country. Installation, connection and control should be carried out by a qualified electrician staff, who act in accordance with the service manual and the device functions.

Fitting is designed for mounting in Ø60 junction box.

1. Disconnect power supply by the phase fuse, the circuit-breaker or the switch-disconnector combined to the proper circuit.
2. Check if there is no voltage on connection cables by means of a special measure equipment.
3. Connect the 14 V DC power supply to 230 V AC.
4. Remove the fitting - with the help of fingers hold the control module and move the fitting upward (as shown in the Figure) and gently pull away from the mounting element.
5. Disconnect the connecting cables between the fitting and the control module.
6. Connect the installation cables into the appropriate terminals of the control module in accordance with the selected connection diagram (Figure 1 or 2) maintaining the correct polarity.
7. Mount the control module in a Ø60 junction box and tighten the screws.
8. Adjust the delay switch off time and the luminous intensity by means of a TIME and LUX potentiometer.
9. Connect the fitting cables with the module mounted in Ø60 junction box.
10. Mount the front of the fitting on the mounting element.
11. Switch on the power supply from the mains.
12. Check if the fitting works properly. If necessary correct the adjusted TIME and LUX values.

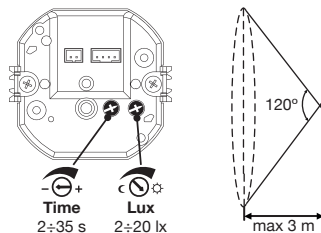


OPERATION

The lighting fitting is equipped with a motion and twilight sensor. The motion sensor is based on the PIR type element and enables to switch on the fitting after motion has been detected in the sensor's detection zone. The fitting is switched on as long as the object is within the area of the motion sensor.

A delayed switch off of a fitting after there is no more motion in the detection zone is adjusted within the range of 2 to 35 seconds according to the TIME potentiometer adjustment.

The built-in twilight switch with an adjustable sensitivity of luminous flux intensity measurement allows a fitting to operate at a given luminous flux. The sensitivity of the twilight switch is adjusted between 2 to 20 lx by means of a LUX potentiometer.



INSTALLATION EXAMPLES

Figure 1.

The fitting is supplied from the 14 V DC power supply. After motion has been detected in the detection zone, the fitting is activated or not depending on luminous flux intensity. After there is no more motion in the detection zone, the fitting is switched off with a delay of 2÷35 seconds according to the adjusted TIME potentiometer.

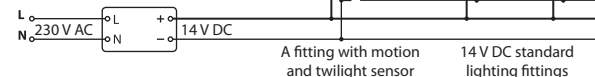
ZNP, ZNN or ZNM power supply in 14 V DC version



Figure 2.

The first lighting fitting is equipped with a motion sensor and a twilight sensor. Other fittings are standard with 14 V DC power supply. Standard fittings are switched on by means of a potential-free 1NO contact as an external connection of the fitting with the motion and twilight sensor. After motion has been detected in the detection zone, all fittings are switched on or not, depending on the luminous flux intensity. After there is no more motion in the detection zone, the fittings are switched off with a delay of 2÷35 seconds according to the adjusted TIME potentiometer.

ZNP, ZNN or ZNM power supply in 14 V DC version



CAUTIONS

- The motion sensor is positioned in such a way in the fitting as to ensure optimal conditions for motion detection, taking into account the specificity of mounting fittings in passageways, staircases and corridors.
- The fitting is equipped with an additional 1NO potential-free contact (normally open potential-free contact). This contact can be used for switching on / switching off any device with a maximum capacity of 3 A for 230 V AC. For example, the contact can be used to switch on other fittings in corridors or passageways as shown in Figure 2.
- The operation range of the motion sensor is up to 3 m with a 120° opening angle.
- Avoid mounting the lighting fitting in a perpendicular way in accordance with the movement direction - optimal mounting in the scope of motion detection is shown in the figure.
- After power supply has been applied, wait at least 30 seconds for the PIR sensor operation to stabilize - only after this time proper operation can be checked.
- The fitting, apart from a sensor, is equipped with a twilight sensor - the sensitivity of luminous flux intensity measurement is adjusted in the range from 2 to 20 lx. This allows to accurately adjust the so-called "Twilight level".

