

ledix

LED lighting fitting

RUBI

with a built-in RGB radio controller



The fitting is equipped with a built-in RGB radio controller



The fitting cooperates with selected EXTA FREE transmitters and with P-260 remote control



Mounting indoor only



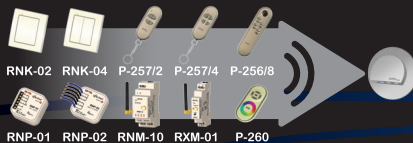
Mounting in a Ø60 junction box.

RUBI with the RGB radio controller is a high quality LED fitting with decorative and application features and with rich functionalities.

The features of the fitting:

- the possibility of a smooth choice of colour in cooperation with P-260 remote control or colours declared by the manufacturer (in cooperation with P-256/8 remote control),
- the possibility of implementing one of four programmes, depending on the transmitter cooperating with the fitting:
 - switch on / switch off (ON / OFF MODE) - all transmitters,
 - automatic fluent, slow change of colour (FLOATING MODE) - P-260, P-256/8,
 - strobe, quick change of colour (STROBE MODE) - P-260, P-256/8,
 - brightening / dimming (fluent adjustment of luminous flux intensity) - only P-260,
- excellent light parameters obtained by using the highest quality LED diodes, minimal power consumption and high durability estimated for five years of continuous light (~ 40 000 h).

TRANSMITTERS COOPERATING WITH RUBI LIGHTING FITTING



Operation range from 40 to 50 m in the open area



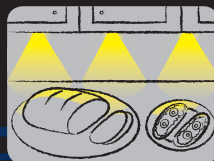
Application:



stairs



corridors, passageways



furniture, decorative lighting

zameL cet

LED lighting fitting

RUBI

with a built-in RGB radio controller



14 V DC

ledix

zameL cet

Cet Lighting Sp. z o.o.

PL 43-200 Pszczyna, ul. Zielona 27, Poland

tel: +48 32 449 15 00, fax: +48 32 449 15 02

e-mail: ledix@ledix.pl, www.ledix.pl

14 V DC; IP20

weight: 116 g

Cet Lighting Sp. z o.o. declares that the device is consistent with the essential requirements and other relevant provisions of the RTTE Directive.

Declaration of Conformity is on www.ledix.pl



The symbol means selective collecting of electrical and electronic equipment. It is forbidden to put the used equipment together with other waste.

09-215 ENG Ver. 01

COOPERATION WITH EXTA FREE TRANSMITTERS

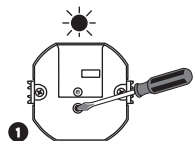
RUBI lighting fitting with a built-in RGB radio controller apart from P-260 and P-256/8 remote controls cooperates with other wireless transmitters of EXTA FREE system (www.extafree.pl). The operation range depends on the transmitter's type.

Transmitter's symbol	Mounting	Range* [m]	Operation modes
RNK-02	surface	50	ON/OFF mode
RNK-04		50	
RNP-01	flush	40	
RNP-02		40	
RNM-10	TH-35 rail	50	
RXM-01		50	
P-257/2	portable remote control	40	
P-257/4		40	

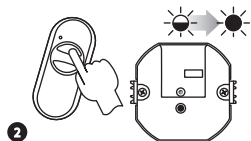
* CAUTION: The given range concerns open area - an ideal condition without any natural or artificial obstacles. If there are some obstacles between a transmitter and a receiver, it is advisable to decrease the range according to: bricks: from 10 to 40%, wood and plaster: from 5 to 20%, reinforced concrete: from 40 to 80%, metal: from 90 to 100%, glass: from 10 to 20%. Over- and underground medium and high electrical power lines, radio and television transmitters, GSM transmitters set close to a device system have also a negative influence on the range.

ADDING OTHER EXTA FREE TRANSMITTERS TO THE FITTING

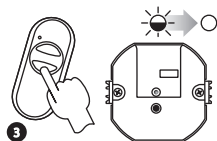
The cooperation of other EXTA FREE system with a fitting is limited to the **ON/OFF** mode (Fitting switching on/switching off).



Press PROG push-button in the fitting for a longer time until STATUS LED red diode switches on (constant signal)

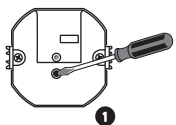


Press and release the first transmitter's push-button (ON). STATUS LED red diode switches on (first signal pulsates, next the signal is constant)

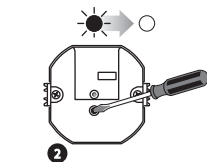


Press and release the second transmitter's push-button (OFF). STATUS LED red diode switches on (the signal pulsates) and next it switches off - THE TRANSMITTER IS ADDED

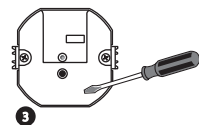
TRANSMITTERS' DELETION



Press PROG push-button in the fitting for a longer time



After 5 seconds STATUS LED red diode switches on and switches off



Release PROG push-button in the fitting - THE MEMORY IS DELETED

TECHNICAL DATA

Supply voltage	14 V DC
Power consumption	1,05 W – at full brightening



Protection degree suitable for indoor use only



The lighting fitting cooperates with selected transmitters of EXTA FREE system

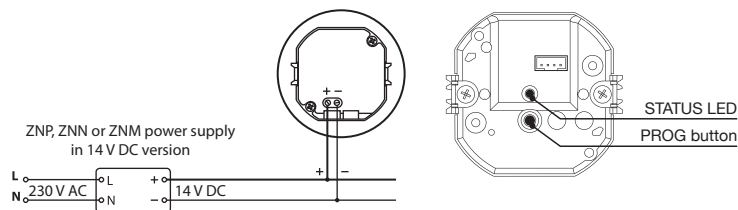


Light source - four LED diodes



Built-in LED diode current stabilization system

INSTALLATION EXAMPLE

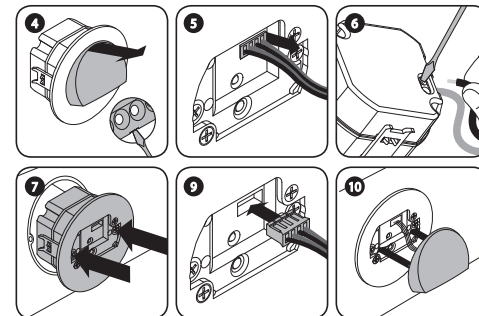


MOUNTING

The device is designed for single-phase installation and must be installed in accordance with standards valid in a particular country. Installation, connection and control should be carried out by a qualified electrician staff, who act in accordance with the service manual and the device functions.

Fitting is designed for mounting in Ø60 junction box.

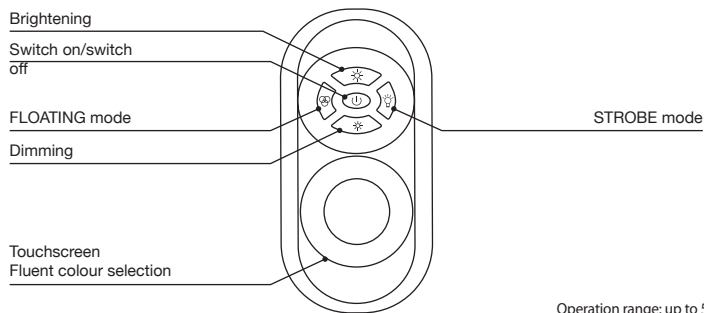
1. Disconnect power supply by the phase fuse, the circuit-breaker or the switch-disconnector combined to the proper circuit.
2. Check if there is no voltage on connection cables by means of a special measure equipment.
3. Connect the 14 V DC power supply to 230 V AC.
4. Remove the fitting – with the help of fingers hold the control module and gently pull away the fitting from the mounting element – if necessary, use a slot drive screwdriver by inserting it into the notch in the casing.
5. Disconnect the connecting cables between the fitting and the control module.
6. Connect the installation cables into the appropriate terminals of the control module in accordance with the selected connection diagram, maintaining the correct polarity.
7. Mount the control module in a Ø60 junction box and tighten the screws.
8. Add a transmitter to a lighting fitting. A detailed description referring to these activities is in the ADDING A REMOTE CONTROL or ADDING TRANSMITTERS.
9. Connect the fitting cables with the module mounted in Ø60 junction box.
10. Mount the front of the fitting on the mounting element.
11. Switch on the power supply from the mains.
12. Check if the fitting works properly.



COOPERATION OF THE FITTING WITH P-260 REMOTE CONTROL

P-260 remote control is dedicated to operate with a built-in RGB radio controller. After the remote control has been added to a fitting, the following functions can be realised:

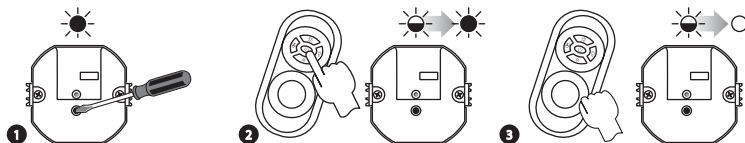
- ON/OFF mode** - switching on / switching off the lighting fitting
- FLOATING mode** - fluent, automatic colour change. The rate of colour change is adjusted permanently (slow).
- STROBE mode** - strobe, automatic colour change. The rate of colour change is adjusted permanently (fast).
- RAINBOW mode** - colour selection by means of a touchscreen.
- Brightening/dimming mode** - luminous flux intensity change.



Colour board for P-260 (STROBE mode)



ADDING P-260 REMOTE CONTROL TO A FITTING



1 Press PROG push-button in the fitting for a longer time until STATUS LED red diode switches on (constant signal)

2 Press the P-260 remote control switch on / switch off push-button for a longer time. Until STATUS LED red diode switches on in the fitting (first signal pulsates, next the signal is constant)

3 Release the P-260 remote control switch on / switch off push-button. STATUS LED red diode switches on in the fitting (the signal pulsates) and next it switches off - THE REMOTE CONTROL IS ADDED

COOPERATION OF THE FITTING WITH P-256/8 REMOTE CONTROL

P-256/8 remote control as well as P-260 remote control cooperates with a fitting with an RGB radio controller without RAINBOW type mode. The user can select one of eight colours declared in the table.

Switching on the fitting - one short press of the push-button 1
The fitting remembers the status before switching off.

Switching off the fitting - longer (> 3s) pressing push-button 1

Switching on the fluent automatic colour change mode (FLOATING)

- Long pressing (> 3s) of the push-button 2

Switching on the strobing automatic colour change mode (STROBE)

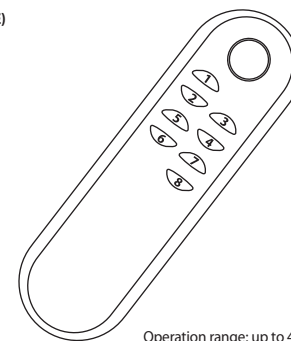
- Long pressing (> 3s) of the push-button 3

Switching on/off the FLOATING / STROBE mode

- Brief pressing of any key from 1 to 8

Selection of colours declared in the colour table

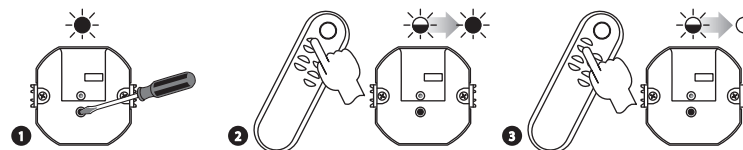
- Short pressing of any button from 1 to 8



Colour table for P-256/8



ADDING P-256/8 REMOTE CONTROL TO A FITTING



1 Press PROG push-button in the fitting for a longer time until STATUS LED red diode switches on (constant signal)

2 Press and release push-button „1“ of P-256/8. STATUS LED red diode switches on (first signal pulsates, next the signal is constant) in the fitting

3 Press and release push-button „2“ of P-256/8 remote control. STATUS LED red diode switches on (the signal pulsates) in the fitting and then it switches off - THE REMOTE CONTROL IS ADDED