

# ledix

## LED lighting fitting TICO



Surface mounting by means of adhesive tapes or mounting glues



The fitting's protection level is suitable to be used outdoor

TICO is a high quality LED fitting with decorative and application features. It is used for lighting corridors, passageways, for decorative lighting of furniture and lighting arrangement in the interior design.

The features of the fitting:

- easy mounting by means of double-sided adhesive tape or mounting glues,
- protection degree IP44 allows for outdoor mounting
- excellent lighting parameters obtained by applying the highest quality LED diodes by CREE
- repeatability of the light colour
- high lighting output with minimum power consumption
- high quality and durability estimated to light continuously for five years (~40 000 h).

#### CAUTION:

- Power supplies of ZNP and ZNN series and of ZNM series in 14 V DC version by Cet Lighting are dedicated to supply the fittings.
- Power supply should be adjusted to the number of powered fittings.



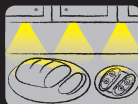
#### Application:



stairs



corridors,  
passageways



furniture,  
decorative lighting

zaMEL cet

14 V DC

LED lighting fitting

## TICO

IP44

zaMEL cet

Cet Lighting Sp. z o.o.  
PL 43-200 Pszczyna, ul. Zielona 27, Poland  
tel: +48 32 449 15 00, fax: +48 32 449 15 02  
e-mail: ledix@ledix.pl, [www.ledix.pl](http://www.ledix.pl)

14 V DC; IP44

weight: 46 g



Declaration of Conformity is on [www.ledix.pl](http://www.ledix.pl)



The symbol means selective collecting of electrical and electronic equipment. It is forbidden to put the used equipment together with other waste.


04-111 ENG Ver. 01


## TECHNICAL DATA

Supply voltage	14 V DC	
Power consumption	0,28 W – cold white	
	0,42 W – warm white	
	0,28 W – red	
	0,28 W – green	
	0,28 W – blue	
	cold white	warm white
Colour rendering index $R_a$	71	80
Colour temperature $T_C$ [K]	5900	3100
Luminous flux $\Phi$ [lm]	10	7
Luminous efficiency [lm/W]	36	17

**IP44**  Protection degree suitable for outdoor use

**2xLED**  Light source - two LED diodes

 The fitting cooperates with photovoltaic cells

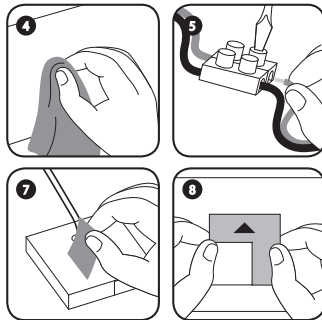
**const**  Built-in LED diode current stabilization system

## MOUNTING

TICO fitting is designed to be mounted by means of adhesive tape or mounting glues.

**The device is designed for single-phase installation and must be installed in accordance with standards valid in a particular country. Installation, connection and control should be carried out by a qualified electrician staff, who act in accordance with the service manual and the device functions.**

1. Disconnect power supply by the phase fuse, the circuit-breaker or the switch-disconnector combined to the proper circuit.
2. Check if there is no voltage on connection cables by means of a special measure equipment.
3. Connect the 14 V DC power supply to 230 V AC.
4. Prepare the surface to which the fitting is to be mounted - the surface must be clean and dry.
5. Connect the output cables of the power supply with the fitting wires with proper polarity (red wire of the fitting means „+“ power).
6. During installation, use the mounting examples shown in diagrams 1 and 2.
7. Apply adhesive tape or glue to the bracket to mount the fitting.
8. Tighten the fitting to the mounting surface.
9. Switch on the power supply from the mains.
10. Check if the fitting works properly.



## INSTALLATION EXAMPLE

Figure 1.  
Fittings connected in a parallel way. The power supply is chosen according to the number of fittings.

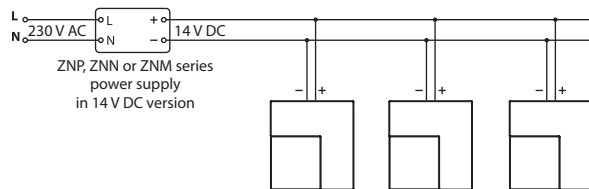
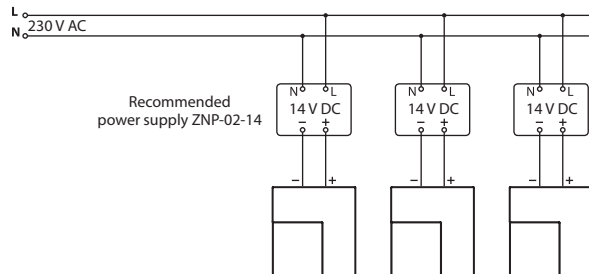


Figure 2.  
Each fitting is supplied separately. The power supply is chosen according to the power of a single fitting.



## CAUTIONS

- 14 V DC power supplies from the Cet Lighting product offer (ZNP, ZNN, ZNM series) should be used to supply the fittings.
- Power supply must be chosen according to the amount of fittings and the way of their installation.
- The light source in fittings is not replaceable - if damaged, replace the entire fitting.
- In case of fittings with standard light colours, the red wire means „+“ power.
- The manufacturer is not liable for damage caused by improper installation and use of the product.